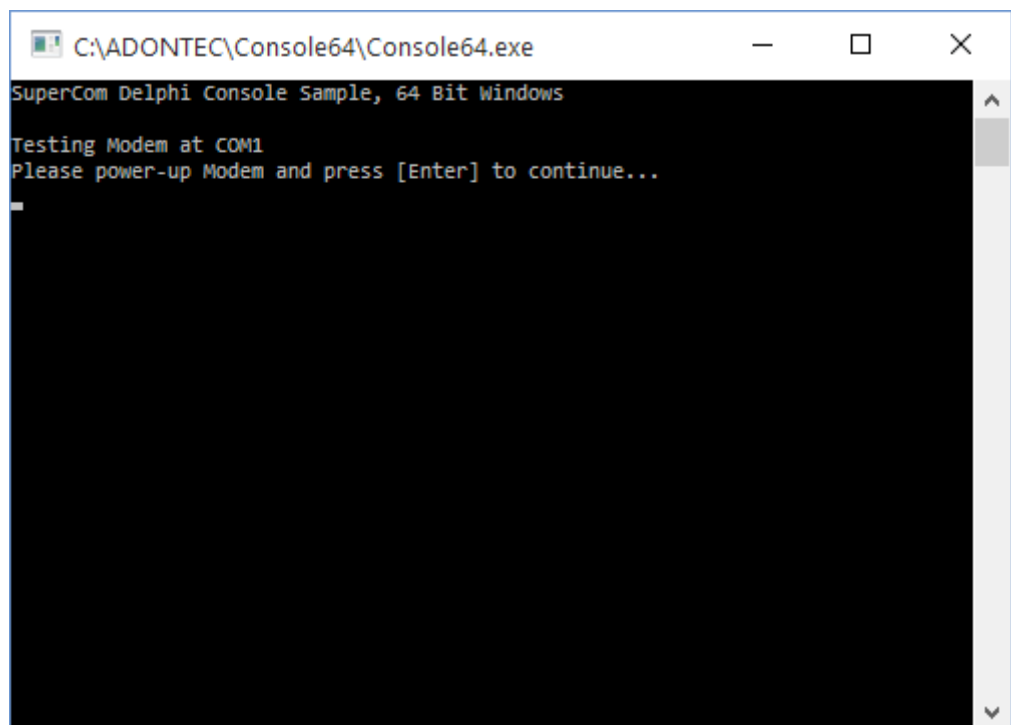
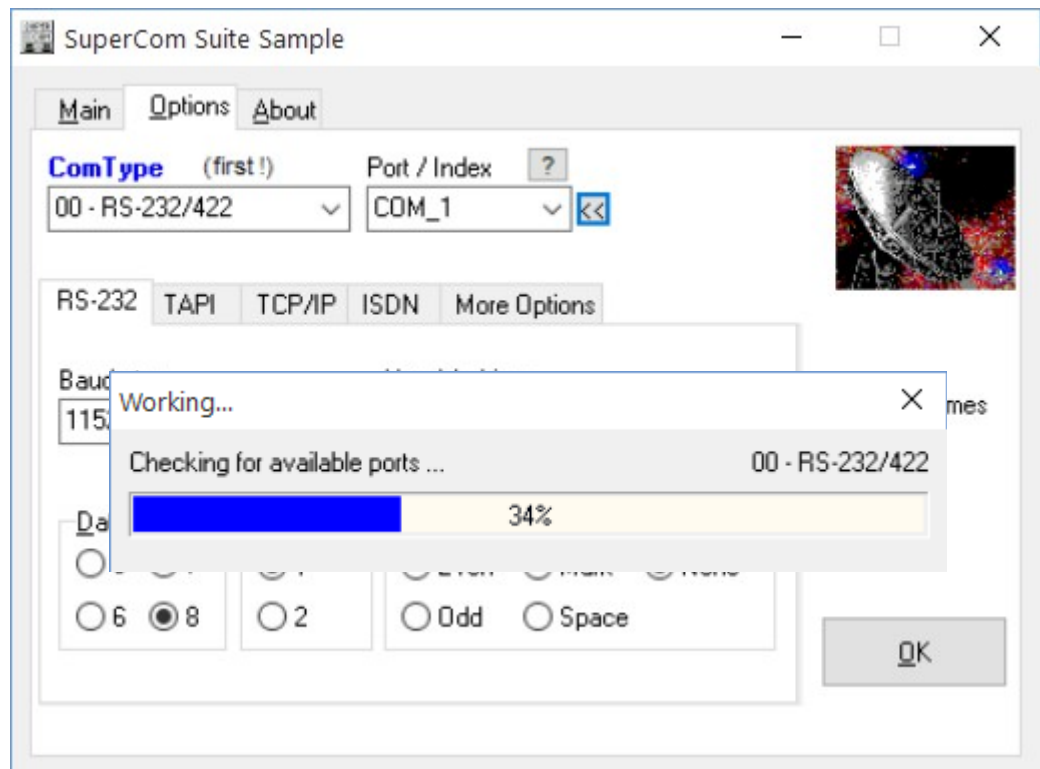


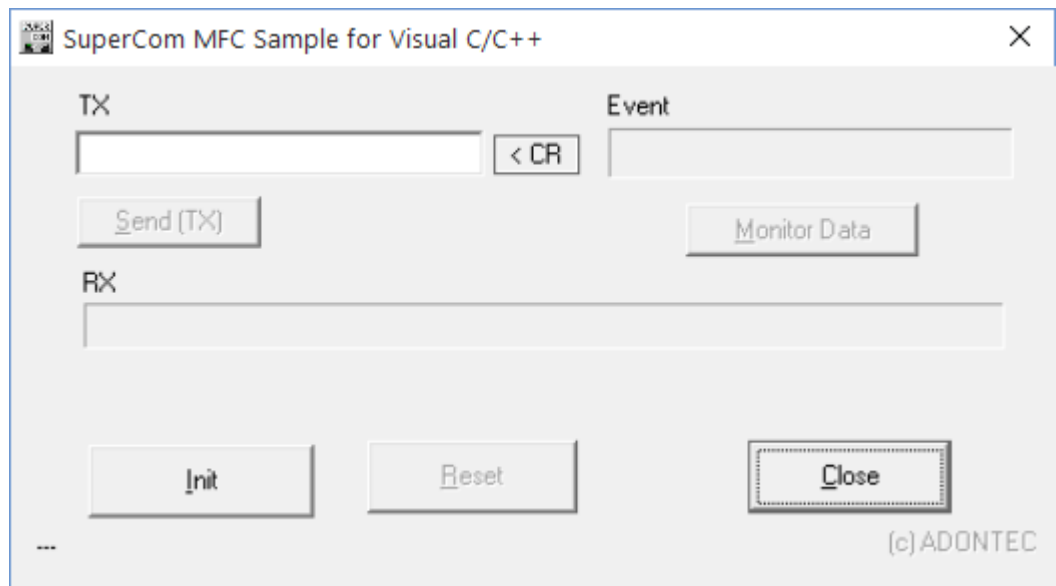
SuperCom 64 Bit (x64) Applications

Below some of the SuperCom x64 examples executed actually under Windows 10.

When using SuperCom it is almost the same source code re-compiled with the project settings set to x64. And, of course, the SuperCom x64 runtime files used.

Other differences between x86 and x64 are taken care by SuperCom classes and the SuperCom runtime files (.DLL, .OCX, .so).





```
SuperCom TCP/IP Server
-----
SuperCom Version 7.85
IP=host, Port=9000
User [,]
TraceToFile=0, TraceToConsole=0, TraceCom=0
-----

Server Status      : Ready /
Server Restarts    : 0
Server Runtime     : 500 Sec
-----

Connections Total:   90      0/Sec
Active:             0
Peak:              10
Failures  Login:    0
           Busy:    0 0
           Idle:   254(SC) - 254(SRV)
-----

USER=90 PASS=90

..press ESC to end..
```

```
Supercom TCP/IP Client [host:9000] | Total:10 A:0(10...
[28.08.2015 12:50:19.494] COM_5: , PLEASE LOGIN USING:USER username+CRLF followi
ng by PASS password+CRLF
[28.08.2015 12:50:19.494] COM_5: ... got WELCOME message ...
[28.08.2015 12:50:19.494] COM_5: ... login ...
[28.08.2015 12:50:19.494] COM_7: CONNECTED
[28.08.2015 12:50:19.494] LogInAndWork on COM_7 started ...
[28.08.2015 12:50:19.494] COM_10: CONNECTED
[28.08.2015 12:50:19.494] LogInAndWork on COM_10 started ...
[28.08.2015 12:50:19.494] COM_8: , PLEASE LOGIN USING:USER username+CRLF followi
ng by PASS password+CRLF
[28.08.2015 12:50:19.494] COM_8: ... got WELCOME message ...
[28.08.2015 12:50:19.494] COM_8: ... login ...
[28.08.2015 12:50:19.494] COM_10: , PLEASE LOGIN USING:USER username+CRLF followi
ng by PASS password+CRLF
[28.08.2015 12:50:19.494] COM_10: ... got WELCOME message ...
[28.08.2015 12:50:19.494] COM_10: ... login ...
[28.08.2015 12:50:19.494] COM_7: , PLEASE LOGIN USING:USER username+CRLF followi
ng by PASS password+CRLF
[28.08.2015 12:50:19.494] COM_7: ... got WELCOME message ...
[28.08.2015 12:50:19.494] COM_7: ... login ...
[28.08.2015 12:50:19.494] COM_9: , PLEASE LOGIN USING:USER username+CRLF followi
ng by PASS password+CRLF
[28.08.2015 12:50:19.494] COM_9: ... got WELCOME message ...
[28.08.2015 12:50:19.494] COM_9: ... login ...
[28.08.2015 12:50:19.510] COM_6: , PLEASE LOGIN USING:USER username+CRLF followi
```

